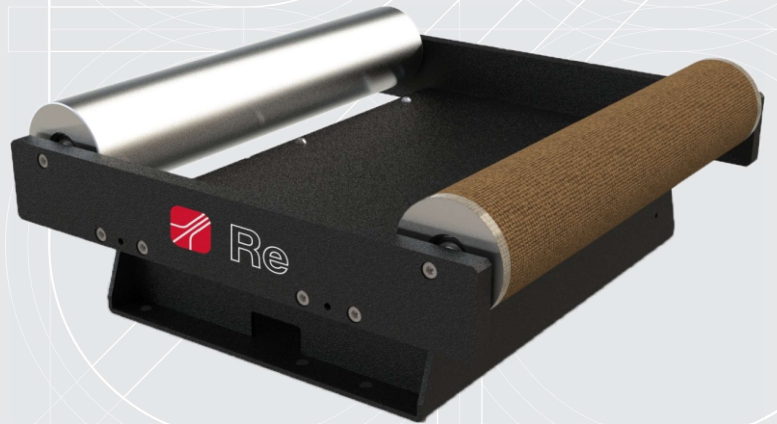




# WG.703

## PIVOTING WEB GUIDING SYSTEM



- ✓ Usually used for labels and nonwovens industry
- ✓ 70 mm/s max speed actuator
- ✓ Stepping motor for a quick and precise regulation
- ✓ Extremely compact design
- ✓ CAN bus network

WG is the pivoting frame series of web guiding system for controlling and align all kind of web. The adjustment geometry is fully inside the electromechanical system and the webguide can be applied in different positions so that all possible web paths can be used. All pivoting frames are equipped with the latest generation stepping motors to guarantee a very quick and precise movement and zero maintenance.

**WG.703** series is a compact model that can be applied in narrow spaces and integrated into existing machines. It is usually used for labels and nonwoven industry. Are also available special versions with fixed or movable workboard with listels or pistons.

**Sensors:** the system can be used with both infrared or ultrasonic sensors to detect the edge, and with optical sensor to detect line or edge, of all kind of materials.

**Controller:** WG.703 can be set up and managed by the MWG10.1 controller that integrates both the control logic and the power driver for motor in a single and very compact case. The 2,8" LCD color graphic display, the user-friendly interface and buttons make sure that the system is very easy to handle.

**Network:** To guarantee a perfect network and communication, eventual external modules of the system (such as a remote keyboard or another web guide unit) are connected with the Re CAN bus interface that also guarantees an increased level of security interference.



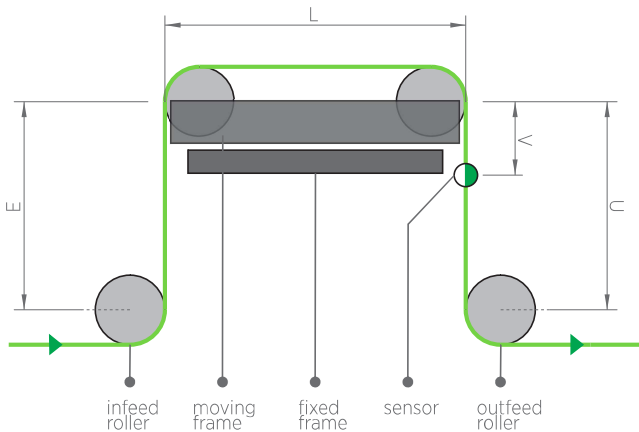
Re S.p.A.  
via Firenze 3  
20060 Bussero (MI) Italy

T +39 02 9524301  
F +39 02 95038986  
E [info@re-spa.com](mailto:info@re-spa.com)

Assistenza tecnica  
Technical support  
T +39 02 952430.300  
E [support@re-spa.com](mailto:support@re-spa.com)

Assistenza commerciale  
Sales support  
T +39 02 952430.200  
E [sales@re-spa.com](mailto:sales@re-spa.com)

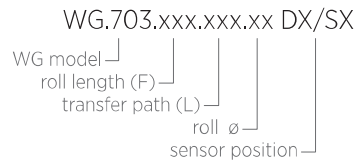
## TECHNICAL DRAWING



### Selection model table

F \ L	350
400	✓
500	✓
550	✓
600	✓

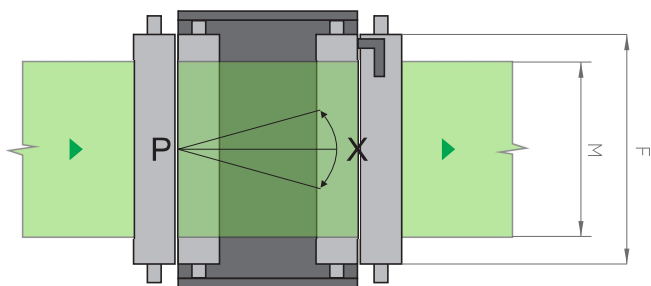
\* for other model contact our technical dpt.



### Optional

Workboard: fixed with listels  
movable with listels  
fixed with pistons

Roller: black tape surface  
tape rubber surface  
cork tape surface



### Functioning

Re pivoting web guiding systems have a mobile frame that rotates around a virtual axis, called pivot, which is the ideal rotation axis, allowing for greater adjustment precision. The material elasticity module determines the space needed to infeed and outfeed material from the web guide, which is at least 3/4 the maximum width of the web. (E and U = 3/4 M max)

E	infeed path	P	pivot point
F	roll length	U	outfeed path
L	transfer path	V	sensor distance
M	material width	X	guide angle

## TECHNICAL CHARACTERISTICS

Power supply	24 Vdc
Power consumption	4 A
Actuator stroke	± 20 mm
Actuator speed	min 4,5 mm/s - max 70 mm/s
Roll lenght F	see table
Transfer path L	see table
Roller diameter	75 mm
Max web tension	300 N
Working temperature	10÷50° C

\*Data are subject to technical change without notice



Re S.p.A.  
via Firenze 3  
20060 Bussero (MI) Italy

T +39 02 9524301  
F +39 02 95038986  
E [info@re-spa.com](mailto:info@re-spa.com)

Assistenza tecnica  
Technical support  
T +39 02 952430.300  
E [support@re-spa.com](mailto:support@re-spa.com)

Assistenza commerciale  
Sales support  
T +39 02 952430.200  
E [sales@re-spa.com](mailto:sales@re-spa.com)