



# SAFETY CHUCKS

## SAF/SAP SLIDING SAFETY CHUCKS



- ✓ Perfect solution for roll support and torque transfer
- ✓ High performance and safety
- ✓ Withstand high speed and loads
- ✓ Long life span
- ✓ Many sizes and options available
- ✓ Replaceable inserts

Re sliding safety chucks are the ideal solution for roll support and torque transfer during the unwinding and rewinding applications.

All Re safety chucks are designed to guarantee reduced setup time, safety for the operator, very high performance and versatility.

Re safety chucks are available in the flange-mounted (SAF) or foot-mounted (SAP) versions, fixed or with axial stroke adjustment with handwheel (+/-25) and with replaceable inserts.

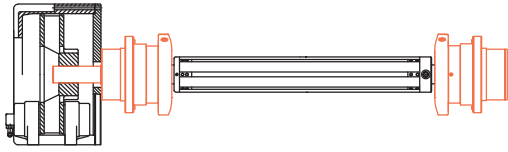
They are very rugged to withstand any working conditions while never sacrificing safety, speed and load.

Moreover, Re safety chucks are designed to guarantee a high level of safety for the operator: they only open in the upright position with a push button and, furthermore, thanks to a safety mechanism, they automatically lock when the shaft starts rotating.

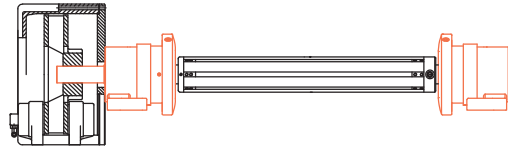
To find the best solution for all applications, are available different kind of inserts that can be easily and quickly replaced: circular-square; square U; square V; triangle.

## TYPICAL APPLICATION

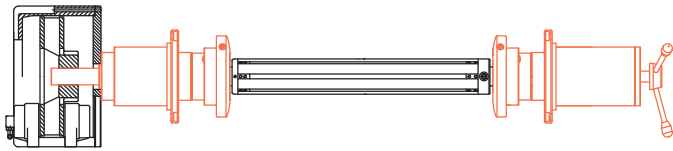
Safety chuck flange mounted SAF



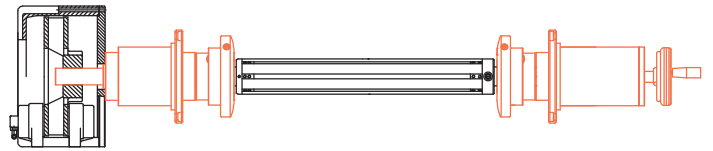
Safety chuck foot mounted SAP



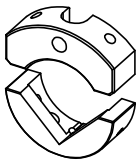
Safety chuck axial adjustment with 3-spoke wheel



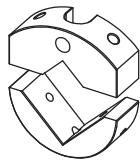
Safety chuck axial adjustment with handwheel



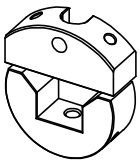
## INSERTS



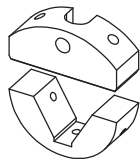
Circular-Square



Square V



Square U



Triangle

	Circular-square		Square V			Square U		Triangle
	42x30	54x40	30x30	40x40	50x50	30x30	40x40	
<b>SAF.21</b>	v		v					
<b>SAF/SAP.31</b>	v		v					
<b>SAF/SAP.41</b>	o	v	o	v		o	o	o
<b>SAF/SAP.51</b>		v		v	v		o	

v = standard insert

o = optional insert

## TECHNICAL DATA

	<b>SAF.21</b>	<b>SAF/SAP.31</b>	<b>SAF/SAP.41</b>	<b>SAF/SAP.51</b>
Max load capacity (single chuck)	325 Kg	400 Kg	800 Kg	1400 Kg
Max speed	1350 rpm	600 rpm	1100 rpm	1350 rpm
Max transmissible torque	250 Nm	235 Nm	900 Nm	1100 Nm
Working temperature	0 ÷ 50°C	0 ÷ 50°C	0 ÷ 50°C	0 ÷ 50°C
Axial movement with handwheel		v		v
Axial movement with 3-spoke wheel		v		v

\*Data are subject to technical change without notice



Re S.p.A.  
via Firenze 3  
20060 Bussero (MI) Italy

T +39 02 9524301  
F +39 02 95038986  
E [info@re-spa.com](mailto:info@re-spa.com)

Assistenza tecnica  
Technical support  
T +39 02 952430.300  
E [support@re-spa.com](mailto:support@re-spa.com)

Assistenza commerciale  
Sales support  
T +39 02 952430.200  
E [sales@re-spa.com](mailto:sales@re-spa.com)